



ITEMS FOR SALE BY SEALED BID

THE FOLLOWING ITEMS ARE FOR SALE BY THE TOWN OF ELK POINT BY SEALED BID. IF YOU WOULD LIKE TO MAKE AN OFFER ON AN ITEM, PLEASE SUBMIT YOUR SEALED BID TO THE TOWN OFFICE NO LATER THAN 4:00 PM ON JUNE 10, 2020. ON THE OUTSIDE OF YOUR ENVELOPE PLEASE WRITE THE NAME OF THE ITEM AND ON THE INSIDE INCLUDE YOUR NAME, CONTACT NUMBER, AND THE AMOUNT OF YOUR OFFER. WE ADVISE THAT ANY OR ALL BIDS, EITHER LOWEST OR HIGHEST, MAY OR MAY NOT BE ACCEPTED BY COUNCIL.

***BIDS WILL BE OPENED AT THE JUNE 22, 2020 LIVE COUNCIL MEETING.
SUCCESSFUL BIDDERS WILL BE CONTACTED WITHIN 2 DAYS AND PAYMENT
MUST BE MADE BY JUNE 26, 2020. IF PAYMENT IS NOT MADE WITHIN THE
REQUIRED TIME FRAME, THE ITEM WILL BE OFFERED TO THE NEXT BIDDER.***

ALL ITEMS ARE SOLD "AS IS, WHEREAS" (BUYER BEWARE)

IF YOU WOULD LIKE TO SCHEDULE A VIEWING OF A SPECIFIC ITEM PLEASE CONTACT JAY DUFFEE, SUPERINTENDENT OF PUBLIC WORKS, AT 780-645-0443. **WE ASK THAT YOU PLEASE FOLLOW ALBERTA HEALTH SERVICES REGULATIONS AND GUIDELINES WHEN CONDUCTING AN IN PERSON VIEWING.**



1999 FORD F150 1/2 TON (NEEDS TRANSMISSION)

- VIN # 2FTZF1725XCB11908



TANDEM AXLE TRAILER

- HOMEMADE
IN 1998
- 35' LONG



KUBOTA SNOWBLOWER

- FITS SMALL
TRACTOR
PRE 1997



BUSH HOG ROUGH MOWER

- MODEL #286
- SERIAL NO.
12-14160
- 72" DECK



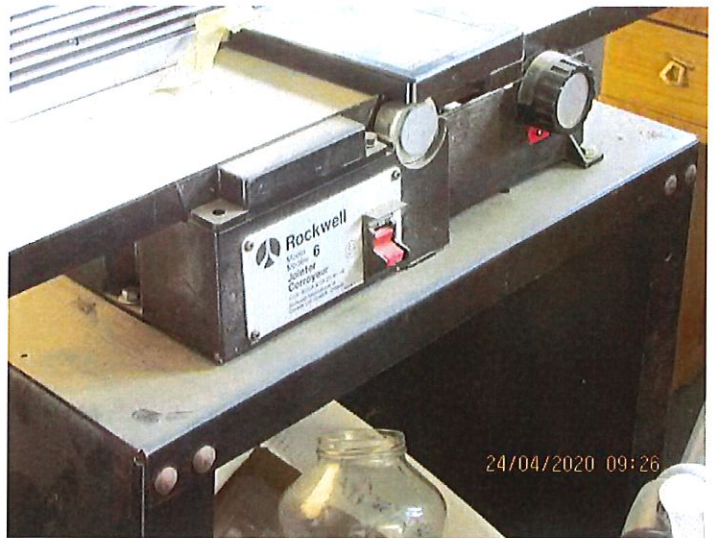
MISCELLANEOUS BENCHES

- 5 AVAILABLE
- CONSTRUCTED OF WOOD AND METAL



GARAGE (TO BE MOVED)

- 24' x 24'
- 16' DOOR



ROCKWELL JOINTER (MODEL 6)



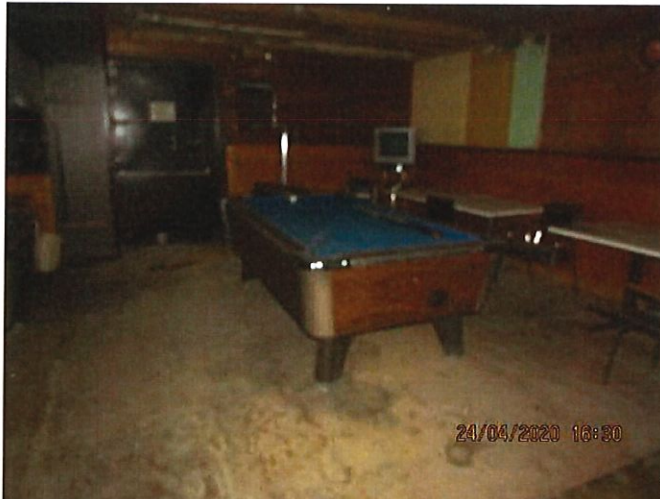
SHOPSMITH (MODEL MARK 5)



POLARIS SNOWMOBILE PARTS



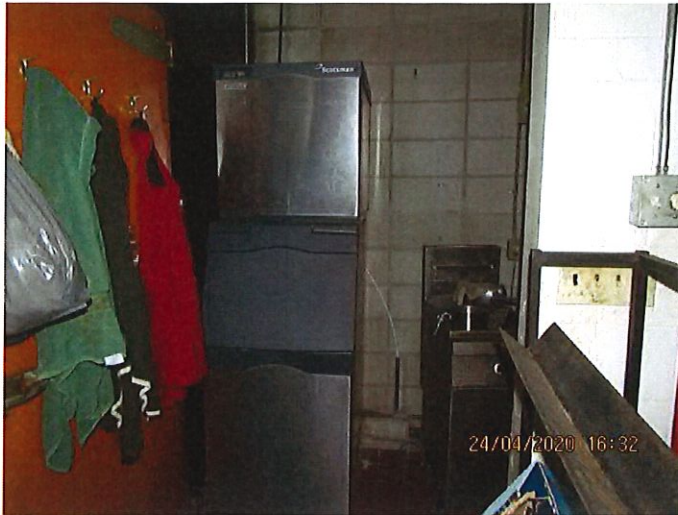
SAFE



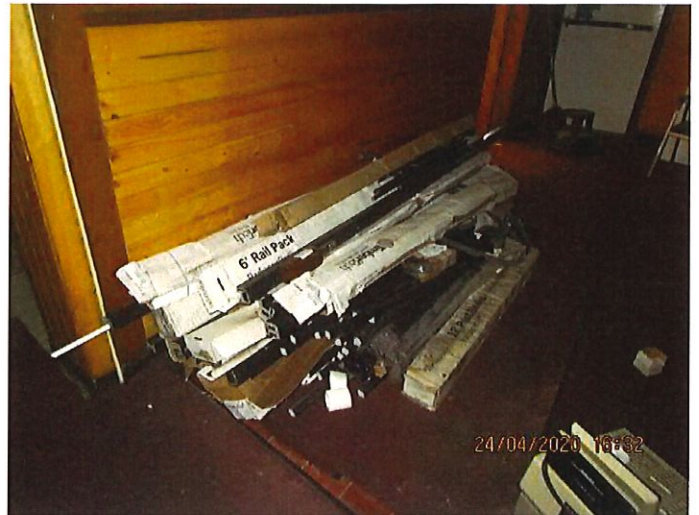
POOL TABLES

- TWO AVAILABLE
- FELT IS DAMAGED
- COIN MECHANISM DAMAGED





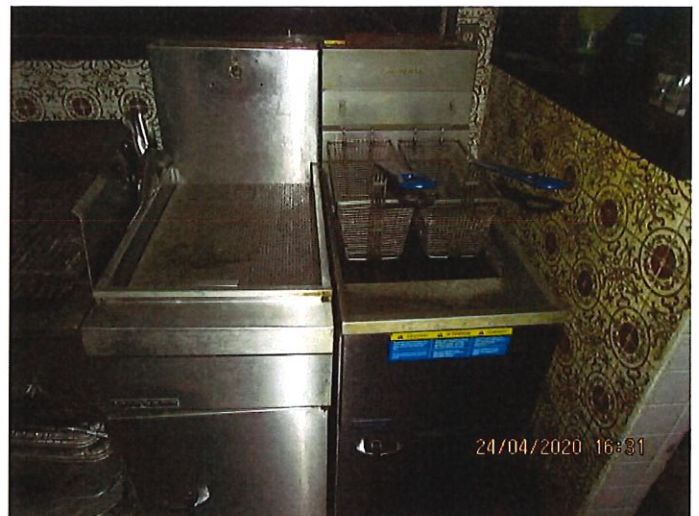
ICE MAKER



ALUMINUM DECK RAIL PIECES



DISHWASHER



DEEP FRYER



COCA-COLA COOLER



MOFFAT GRILL



MULTIPLE SPEAKERS



MULTIPLE SPEAKERS



STAGE LIGHTING



TABLES



LIGHT FIXTURES



TABLES & CHAIRS



CHAIRS - 1 AVAILABLE



CHAIRS - 2 AVAILABLE



BULLETIN BOARD



WALL DIVIDER



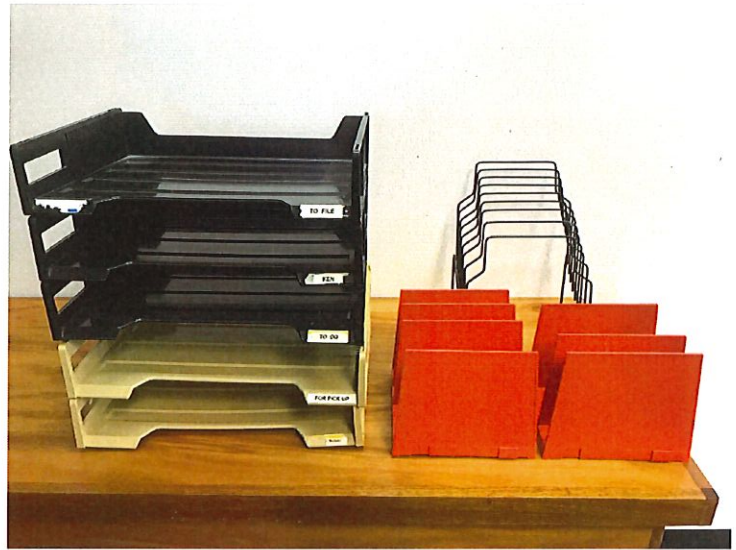
2 DRAWER FILE CABINET



PAPER SHREDDER



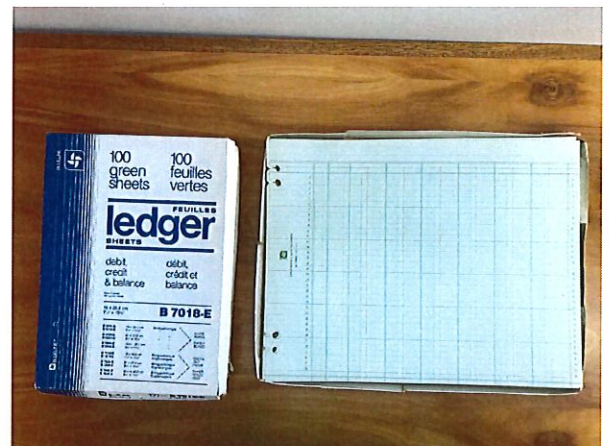
PAPER FOLDER



PAPER TRAYS & STANDS

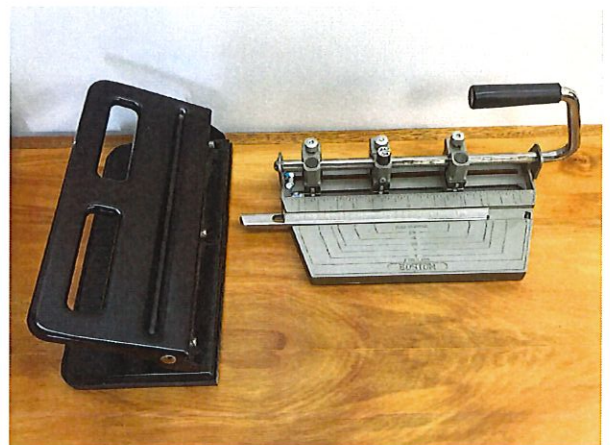


COLUMNAR PADS—VARIOUS SIZES



COLUMNAR REFILLS

4 COLUMN—2 AVAILABLE 14 COLUMN—2 AVAILABLE
 8 COLUMN—5 AVAILABLE 21 COLUMN—1 AVAILABLE
 10 COLUMN—3 AVAILABLE 36 COLUMN—1 AVAILABLE
 12 COLUMN—5 AVAILABLE



HOLE PUNCHES